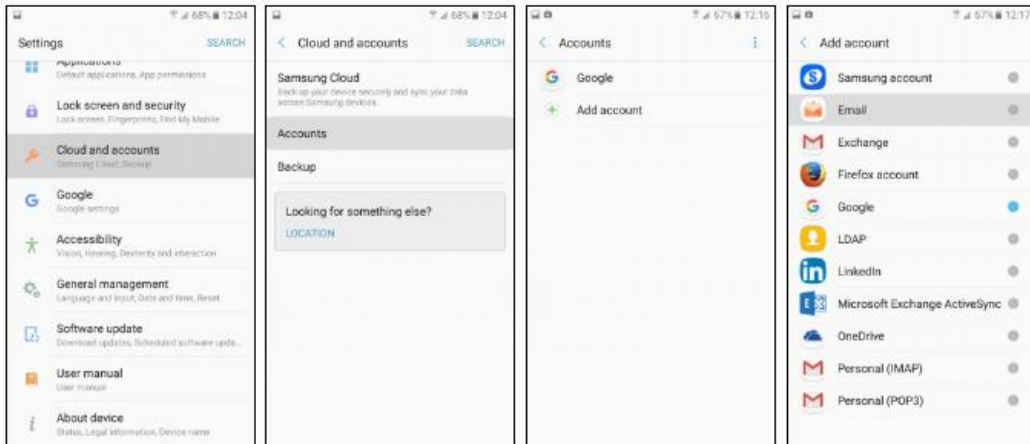
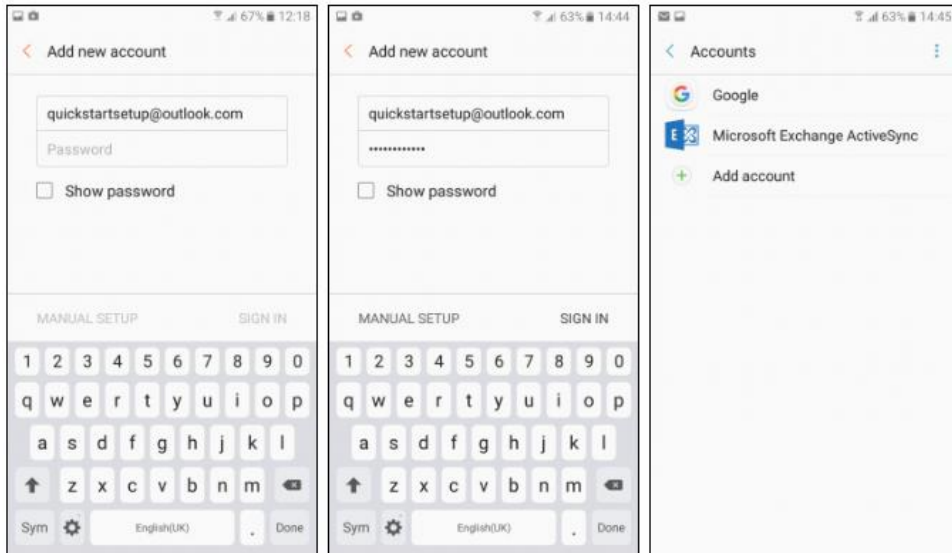




Email Setup



1. Open the **Settings** menu and tap on **Cloud and accounts**.
2. In the new menu, press **Accounts** to view a list of any accounts you've already added.
3. To add a new account, press **Add account**.
4. You can choose a specific type of account to add, but if you're unsure what your account is just tap **Email**.



5. Most email accounts can be configured quite quickly, simply type in your **email address** and **password**, then tap **Sign in** to continue.
6. Some accounts may ask you to customise your email, picking how often to check for new messages and what name you'd like to assign to the account. When you are happy with the settings, tap **Next**.
7. You should now see your **Email** type listed in the Accounts section. Email from your account will now be delivered to the Email app, which you can find in the **Apps** tray.

If your account failed to set up automatically, you will be returned to the main email setup page with your email address and password in the boxes. In order to add your email account to the Galaxy A5 you will have to do a **Manual Setup**. In order to do this, you will need to know the type of account you have (POP3, IMAP or Exchange) and additional, account specific information.

This additional information will include the account **Username**, **Password**, and also **incoming & outgoing mail server** settings, all of which will have to be entered onto the on screen form. If your account is an **Exchange** account, you will need to know **domain** and **Exchange server** information.