



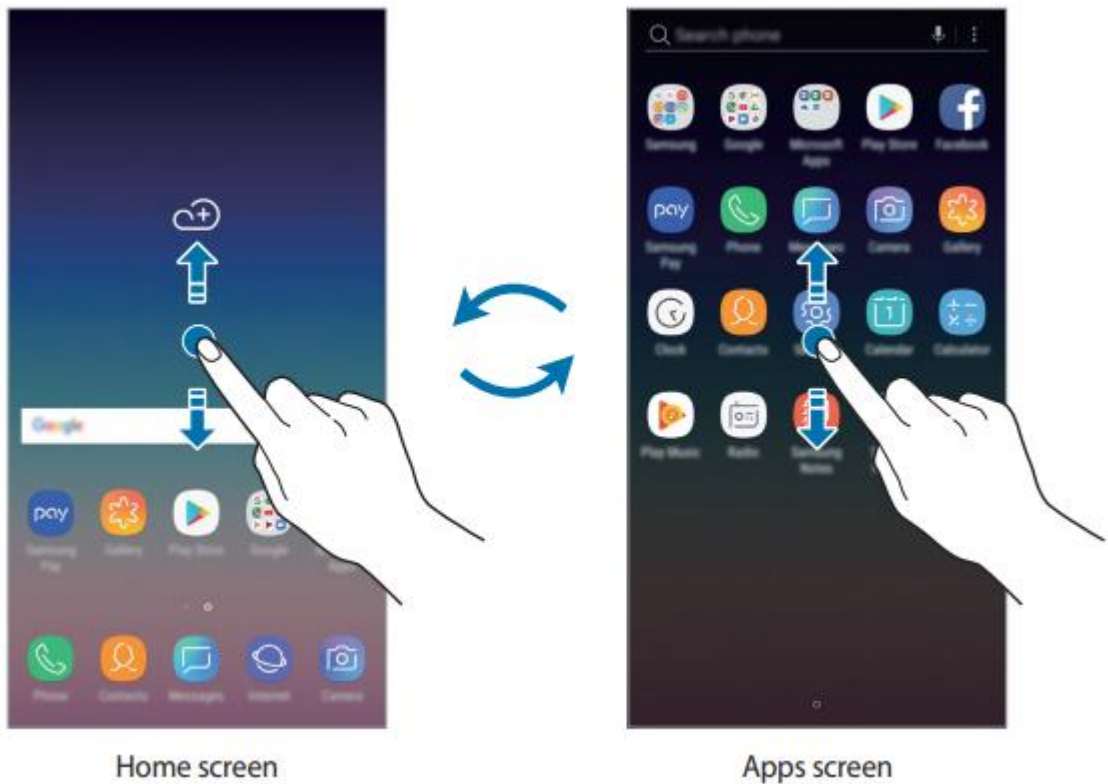
## Getting Started - Your Home Screen

The Home screen is the starting point for accessing all of the device's features. It displays widgets, shortcuts to apps, and more. The Apps screen displays icons for all apps, including newly installed apps.



## Switching between Home and Apps screens

On the Home screen, swipe upwards or downwards to open the Apps screen. To return to the Home screen, swipe upwards or downwards on the Apps screen. Alternatively, tap the Home button or the Back button.



If you add the Apps button on the Home screen, you can open the Apps screen by tapping the button. On the Home screen, tap and hold an empty area and tap Home screen settings → Apps button → Show Apps button → APPLY. The Apps button will be added at the bottom of the Home screen.



## Moving items

Tap and hold an item, and then drag it to a new location. To move the item to another panel, drag it to the side of the screen.

To add a shortcut to an app on the Home screen, tap and hold an item on the Apps screen, and then drag it to the top or bottom of the screen. A shortcut to the app will be added on the Home screen.

You can also move frequently used apps to the shortcuts area at the bottom of the Home screen.

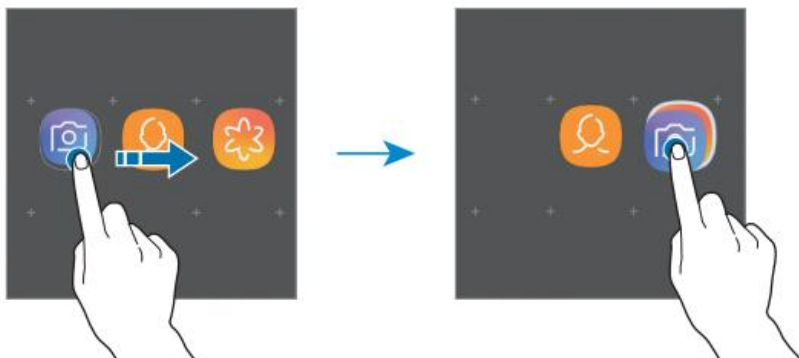
## Creating folders

Create folders and gather similar apps to quickly access and launch apps.

1 On the Home screen or the Apps screen, tap and hold an app, and then drag it over another app.

2 Drop the app when a folder frame appears around the apps.

A new folder containing the selected apps will be created. Tap Enter folder name and enter a folder name.



## Adding more apps

Tap ADD APPS on the folder. Tick the apps to add and tap ADD. You can also add an app by dragging it to the folder.

- Moving apps from a folder

Tap and hold an app to drag it to a new location.

- Deleting a folder

Tap and hold a folder, and then tap Delete folder. Only the folder will be deleted. The folder's apps will be relocated to the Apps screen.

## Editing the Home screen

On the Home screen, tap and hold an empty area, or pinch your fingers together to access the editing options. You can set the wallpaper, add widgets, and more. You can also add, delete, or rearrange Home screen panels.

- Adding panels: Swipe to the left, and then tap + .
- Moving panels: Tap and hold a panel preview, and then drag it to a new location.
- Deleting panels: Tap Bin on the panel.



- Wallpapers: Change the wallpaper settings for the Home screen and the locked screen.
- Themes: Change the device's theme. Visual elements of interface, such as colours, icons, and wallpapers, will change depending on the selected theme.
- Widgets: Widgets are small apps that launch specific app functions to provide information and convenient access on your Home screen. Tap and hold a widget, and then drag it to the Home screen. The widget will be added on the Home screen.
- Home screen settings: Change the size of the grid to display more or fewer items on the Home screen and more.