

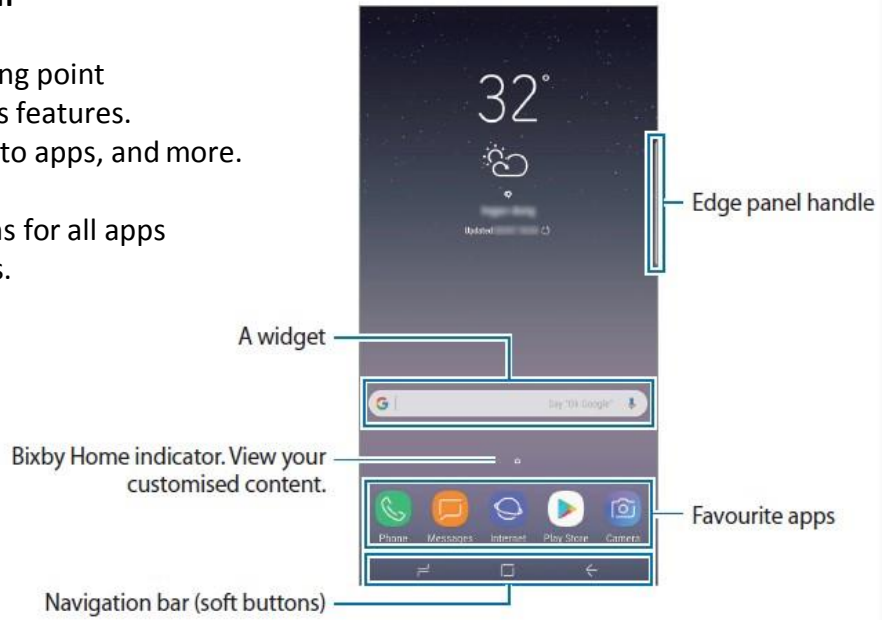
# Samsung Galaxy S8 – Getting Started



## Home screen and Apps screen

The Home screen is the starting point for accessing all of the device's features. It displays widgets, shortcuts to apps, and more.

The Apps screen displays icons for all apps including newly installed apps.



## Switching between Home and Apps Screens

On the Home screen, swipe upwards or downwards to open the Apps screen.

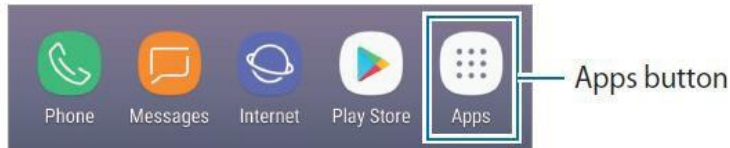
To return to the Home screen, swipe upwards or downwards on the Apps screen.

Alternatively, tap the Home button or the Back button.



If you add the Apps button on the Home screen, you can open the Apps screen by tapping the button. On the Home screen, tap and hold an empty area and tap Home screen settings

→ Apps button → Show Apps button → APPLY. The Apps button will be added at the bottom of the Home screen.



## Indicator icons

Indicator icons appear on the status bar at the top of the screen. The icons listed in the table below are most common. The status bar may not appear at the top of the screen in some apps. To display the status bar, drag down from the top of the screen.

Icon	Meaning
	No signal
	Signal strength
	Roaming (outside of normal service area)
	Preferred SIM or USIM card for calls (dual SIM models)
	GPRS network connected
	EDGE network connected
	UMTS network connected
	HSDPA network connected
	HSPA+ network connected
	LTE network connected (LTE-enabled models)
	Wi-Fi connected
	Bluetooth feature activated
	Location services being used
	Call in progress
	Missed call
	New text or multimedia message