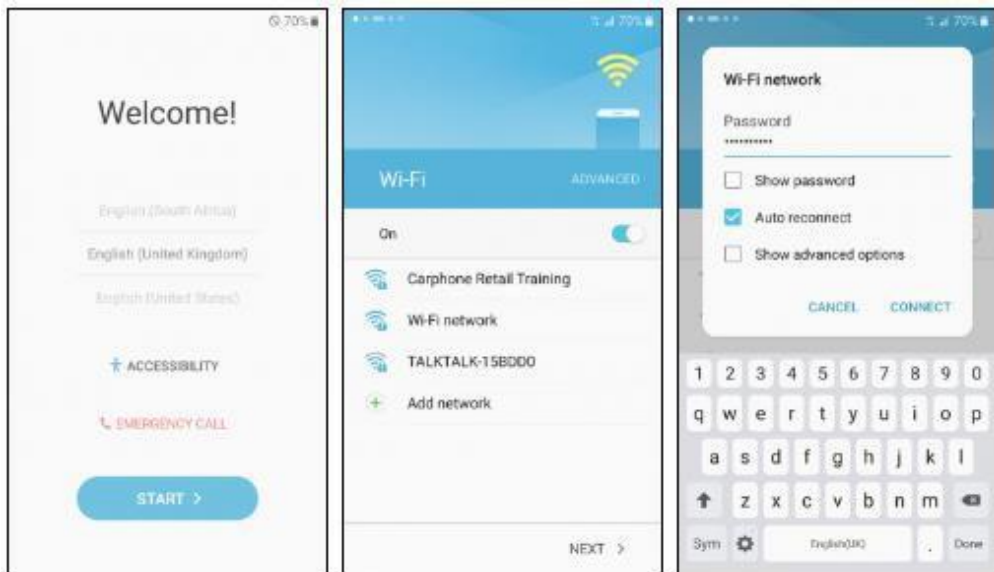


## Samsung Galaxy A3 2017

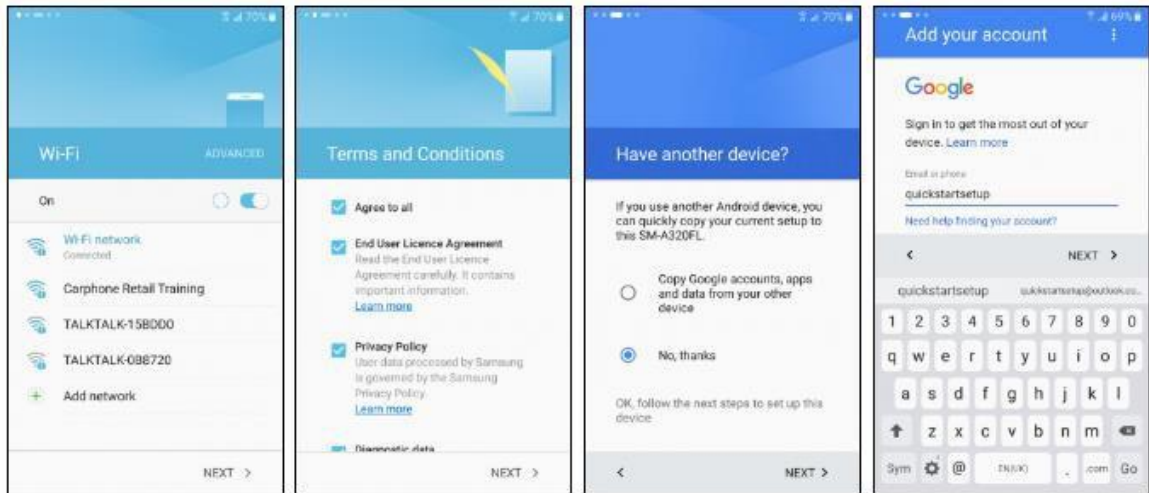


The following information will assist you in getting started with your new handset



1. The first screen of the setup wizard will ask you to **Select your language**. Choose your preferred language by scrolling through the menu (English UK is the default option) and then tap the blue **Start button**.
2. The next screen prompts you to connect to a nearby wireless network. If you do not see any network names, check the **switch** at the top is on (showing blue). If it isn't, tap the switch to turn it on. In the list of networks shown, tap on the **name** of the wireless network you wish to connect to.
3. When prompted, enter the **password** for the Wi-Fi network. This is usually shown on a sticker on your router, and may be referred to as a *WEP key*, *WPA key* or *wireless passphrase*. Passwords are case-sensitive, and you can check your typing by ticking the **Show password** box.

When you're ready to proceed, tap **Connect**.

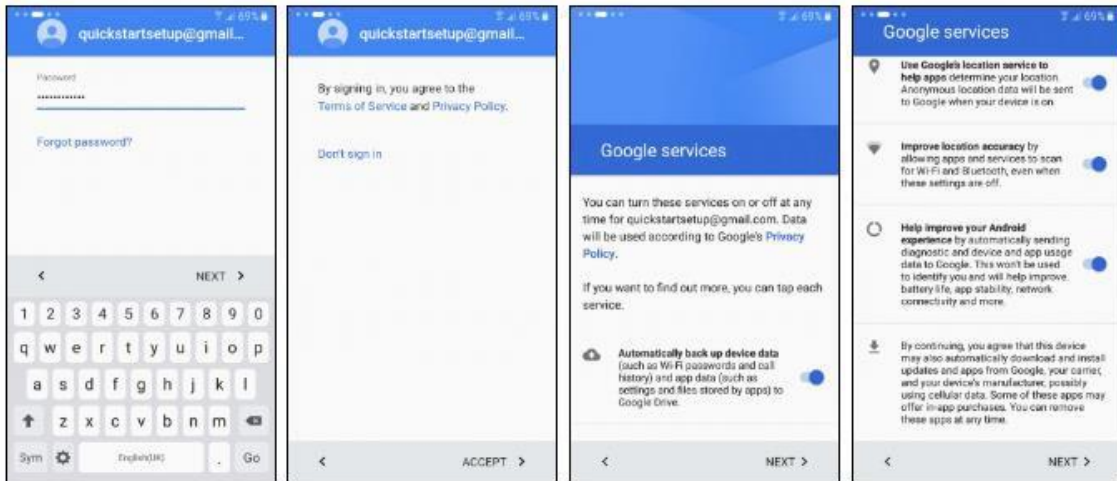


4. Once the screen shows you've connected. You will be able to see a Wi-Fi symbol on the top line of the display next to the signal bars. The signal strength may vary, so not all the curved bars may be lit up, but as long as the symbol is there you're connected. Tap Next to continue.
5. If you want to use the handset you will have to read and agree to the EULA (End User License Agreement). Tap **Agree to all** to quickly select all the options, or tick each one individually if you'd like to read a bit more about each condition. Tap **Next** to move on.
6. At this stage, you can transfer your Google account and data from one NFC equipped Android phone to another. Choose to **Copy Google accounts...** to send information between your phones over Bluetooth, or choose **No, thanks** to set this up as a totally new phone.
7. On the next page you will be asked to sign in to your Google account (an email address ending in *gmail.com* or *googlemail.com*). Having a Google account unlocks some great features of the phone; without one you can't browse the Play Store or sync your contacts to your Google email address.

If you haven't already got a Google account you can **create a new account** for free.

If you don't wish to add a Google account at this point (not recommended) can you **Skip** this.

To sign in, enter your **Google address** and tap **Next**.



8. The next step to signing in is to enter your **Google password** in the space provided, and then tap **Next**. If you're creating a new account, complete the form, filling the details in as you go. You will have to accept the Terms of Service and Privacy Policy in order to use the handset Inspect them if you wish by tapping on the links, and when you're happy to agree, tap **Accept**.

9. The next page is about background services your Google account can perform.

**Backup** allows your Google account to back up your handset's apps and settings, which is extremely useful when it comes to upgrading or replacing a lost or damaged handset, and therefore something we would recommend. Untick this box to disallow this, and then tap **More** to scroll down to see the other services.

10. **Location** settings relate to letting your phone (and Google) know where in the world you are, which will help improve internet search results, and satellite navigation apps will thank you for it. You will also be invited to **improve Android** by providing anonymous feedback. **Untick** any of the options on this screen if you wish to opt out of them, and tap **Next** to continue.



11. The Play store offers paid-for as well as free content and you will be invited to set up a billing method. To securely register a **credit or debit card** to pay for content, or **redeem a Play Store voucher** tap the appropriate option. You may also be offered the option of having purchases billed through your mobile network, if they allow this. To skip setting up a payment method at this stage, select **Remind me later**.

Once you've made your decision, tap **Next** to move on.

12. At this stage of the setup, you can add more email accounts to your handset. We can (and do) set these up in a later chapter, so we will **skip** this for now.

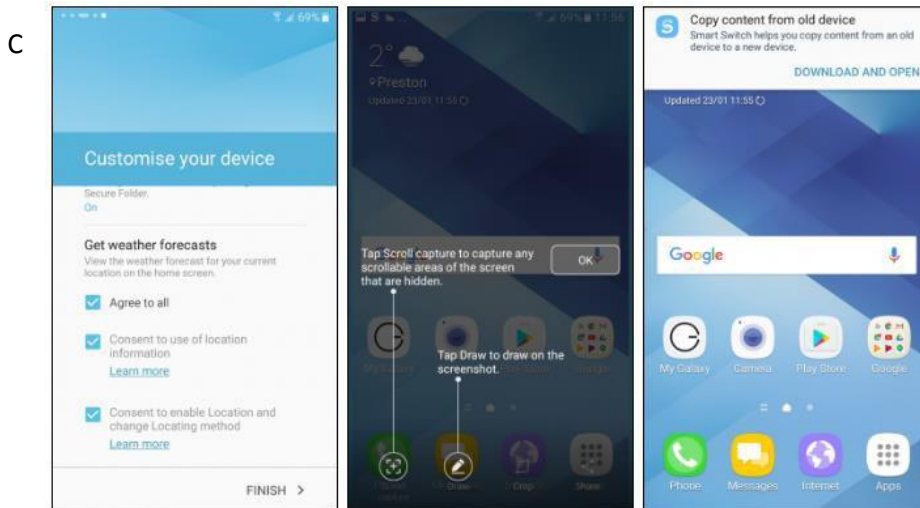
A modern smartphone has lots of information on it, and you will be permanently logged in to your email, social media and other accounts to allow easy access to them. For this reason, it's always wise to set up a screen lock to keep your data away from prying eyes.

We can do this now by choosing either to **set up fingerprint** or **set up PIN, pattern or password** depending on what works best for you. We explain how to set up a lock screen later in this guide, so tap **Skip** to bypass this.

If you chose to skip, you'll have to confirm your action by tapping **Skip** again.



13. If you have set up your Google account on a previous Android phone or tablet and turned on backups, you can import that data to your new handset. Tapping the name of your old phone will start the transport process. Choose **Don't restore** to set up the handset as a brand new phone. You will then be asked about using a Samsung account. This is optional, and gives you access to some exclusive Samsung apps and content. If you've set this up on a previous Samsung handset, tap **Sign in**. If you're new to Samsung, you can tap **Create account** to set one up for free or use your **Google account** to do so. You can, of course, **Skip** this entirely to save a bit of space on your handset



14. Customise your device with localised weather forecasts which use your GPS data to work out where you are before showing you weather predictions. Tick the **Agree to all** boxes to allow weather to see your location, or leave the boxes unticked to ignore this. Press **Finish** to continue.

You will now see the Home screen of your Samsung handset. You will see shortcuts to your apps as well as widgets like the clock and weather widget at the top of the screen.