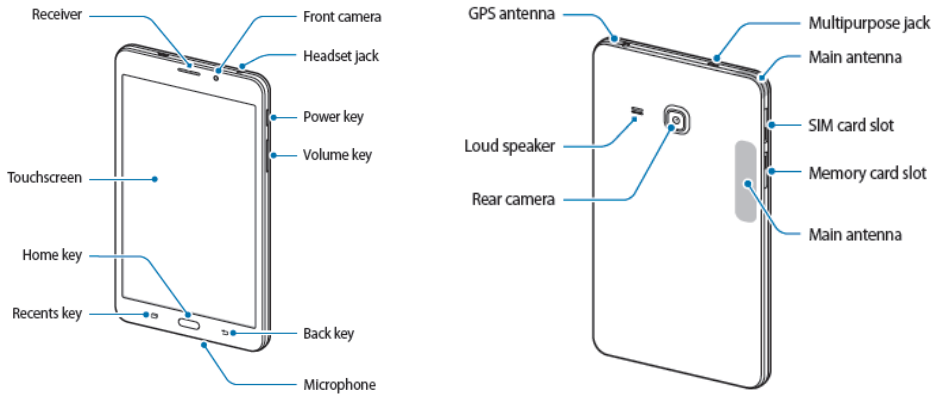


Samsung Galaxy Tab A 7.0

- Getting Started

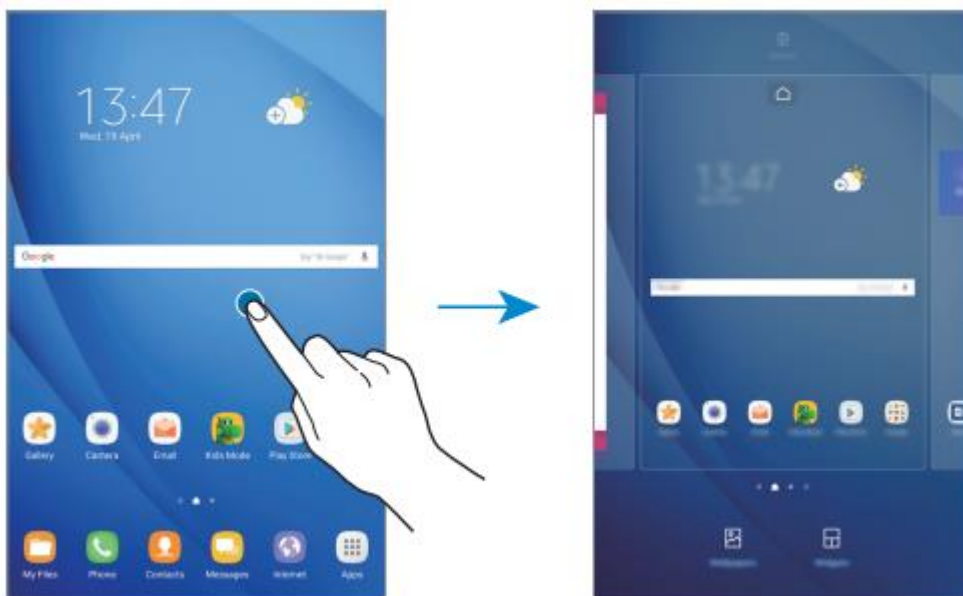
Device Layout



Home screen options

On the Home screen, tap and hold an empty area, or pinch your fingers together to access the available options. Customise the Home screen by adding, deleting, or rearranging Home screen panels. You can also set the Home screen wallpaper, add widgets to the Home screen, and more.

- Wallpapers: Change the wallpaper settings for the Home screen and the locked screen.
- Widgets: Add widgets to the Home screen. Widgets are small apps that launch specific app functions to provide information and convenient access on your Home screen.



Adding items

Tap and hold an app or a folder from the Apps screen, and then drag it to the Home screen. To add widgets, tap and hold an empty area on the Home screen, tap Widgets, tap and hold a widget, and then drag it to the Home screen.

Moving items

Tap and hold an item on the Home screen, and then drag it to a new location. You can also move frequently used apps to the shortcuts area at the bottom of the Home screen. To move the item to another panel, drag it to the side of the screen. To move an item more easily, tap and hold an item, and drag it to Move apps at the top of the screen. The item will move to the panel at the top of the screen. Swipe to the left or right to move to another panel and drag the item to a new location.

Removing items

Tap and hold an item, and then drag it to Remove shortcut, Delete, or Remove at the top of the screen.

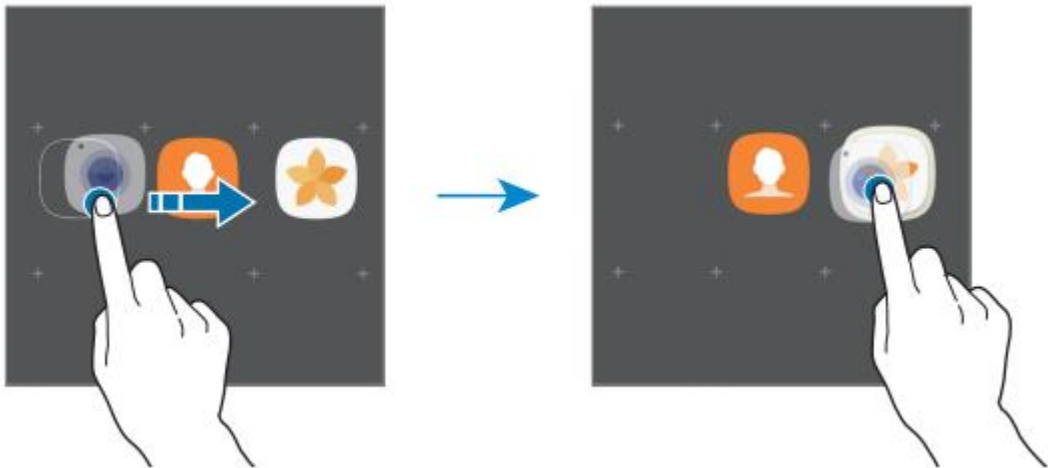
Creating folders

Create folders and gather similar applications to quickly access and launch apps.

1 On the Home screen, tap and hold an app, and then drag it over another app.

2 Drop the app when a folder frame appears around the apps.

A new folder containing the selected apps will be created.



3 Tap Enter folder name and enter a folder name.

To change the folder colour, tap the paint pallet.

To add more apps to the folder, tap ADD, tick the apps, and then tap ADD. You can also add an app by dragging it to the folder on the Home screen.

To move apps from a folder to the Home screen, tap the folder, and then drag an app to the Home screen.

To delete apps in a folder, tap the folder, and then drag the app you want to delete to Remove shortcut at the top of the screen.