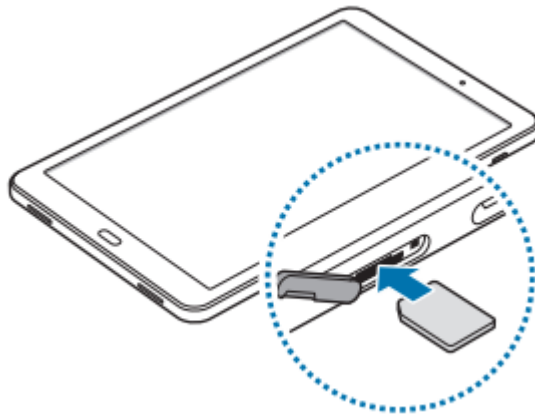


Samsung Galaxy Tab A 10.1 – Insert SIM

1. Open the cover of the SIM card slot.
2. Insert the SIM or USIM card with the gold-coloured contacts facing downwards.



3. Push the SIM or USIM card into the slot until it locks in place.

Do not insert a memory card into the SIM card slot. If a memory card happens to be lodged in the SIM card slot, take the device to a Samsung Service Centre to remove the memory card.

4. Close the cover of the SIM card slot.