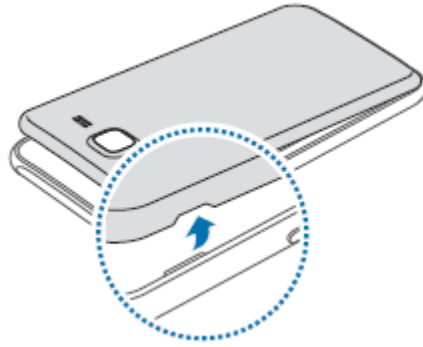


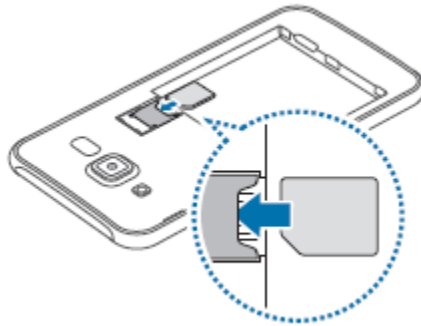


Samsung Galaxy J5 - How to insert your sim card

Open the back cover



Slide sim card into slot



If you needed a new sim card, you will have received a triple sim card pack. You'll need to pop out the appropriate sim card that is needed for your Samsung Galaxy J5.



Mini-SIM



Micro SIM



Nano Sim

Samsung Galaxy J5 uses a Micro sim card.