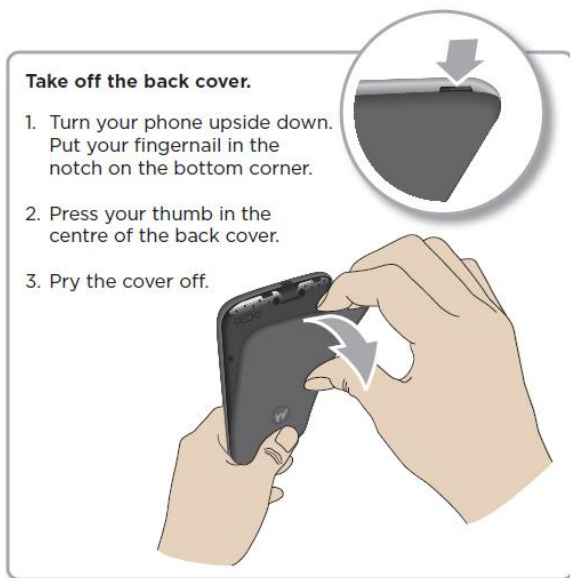
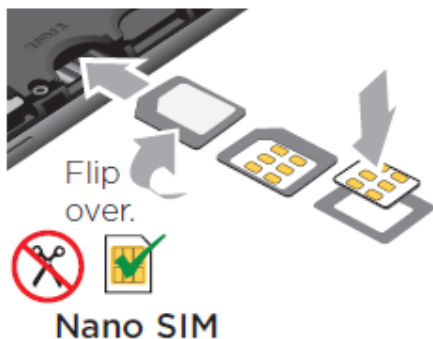


## Moto G4 – Insert Sim Card



### Nano SIM card:

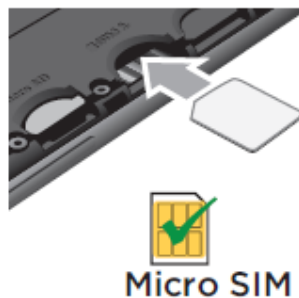
Put a nano SIM into an adapter and flip it over. Push the adapter into the SIM slot with the gold contacts facing down.



### Micro SIM card:

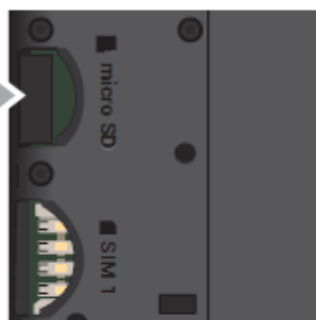
Push a micro SIM card directly into the slot with the gold contacts facing down.

**Note:** do not use an adapter.



**Put in the optional memory card.**

**micro  
SD**  
(optional)



**Charge up & power on.**



**Note:** fully charge your phone before using it.



Press & hold Power until the screen lights up.