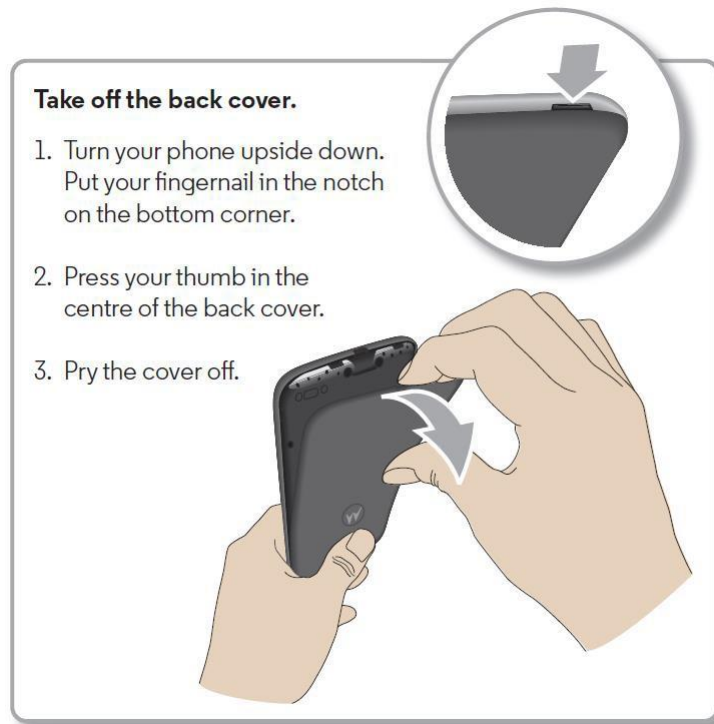




Moto E3 – Insert Sim Card



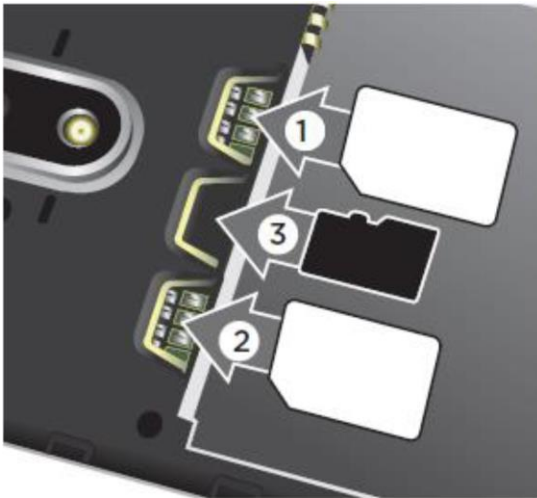
Remove the battery & put in cards

Caution: make sure you use the correct size SIM cards and don't cut the SIM cards. Don't use tools to remove the cover-doing so may damage your battery or your phone. Both of the card slots support 4G/3G/2G data services, but you can enable only one SIM card for data connection at a time.

Remove the battery.



Put in the SIM & optional memory cards.



1. SIM 1
2. SIM 2
3. microSD (optional)

Micro
S, ,



Micro SIM

Put on the cover & power on

Insert an optional memory card. Put on the back cover. Charge your phone fully and turn the power on. Then select your language and follow the screen prompts to get started.

Put in the battery & put on the cover.



Charge up & power on.



Note: Fully charge your phone before using it.

Press & hold Power until the screen lights up.