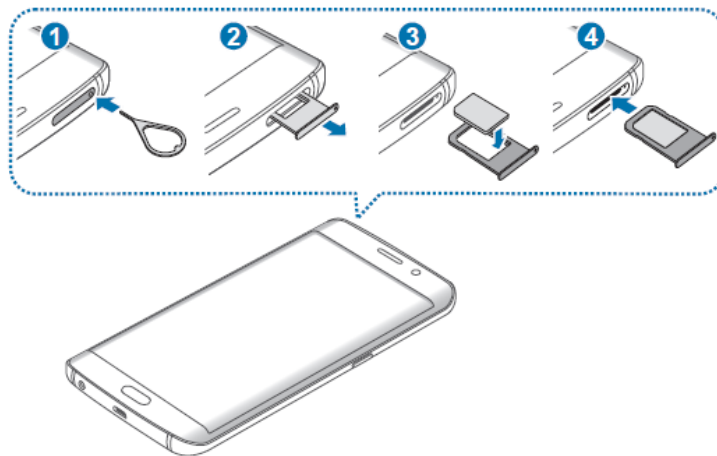




## Samsung Galaxy S6 Edge+ How to insert your sim card

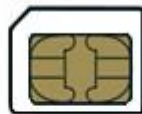
You will find the sim card tray on the right hand side of the handset. Use a paper clip or the sim eject tool which can be found inside the box.



If you needed a new sim card, you will have received a triple sim card pack. You'll need to pop out the appropriate sim card that is needed for your Samsung Galaxy S6 Edge+.



Mini-SIM



Micro SIM



Nano Sim

Samsung Galaxy S6 Edge+ uses a Nano sim card.