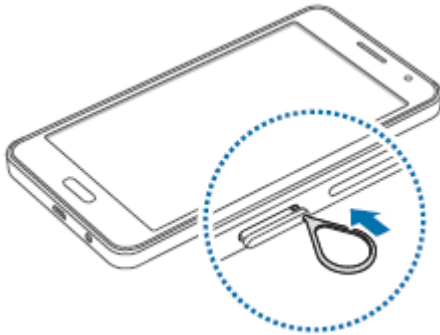


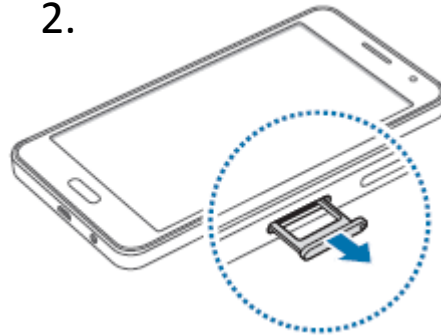
## Samsung Galaxy A3 - How to insert your sim card

You will find the sim card tray on the right hand side of the handset. Use a paper clip or the sim eject tool which can be found inside the box.

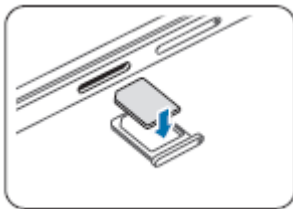
1.



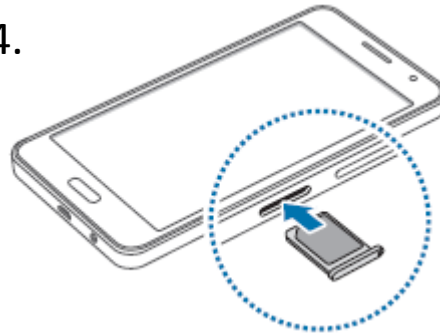
2.



3.



4.



If you needed a new sim card, you will have received a triple sim card pack. You'll need to pop out the appropriate sim card that is needed for your Samsung Galaxy A3.



Mini-SIM



Micro SIM



Nano Sim

Samsung Galaxy A3 uses a Micro sim card.